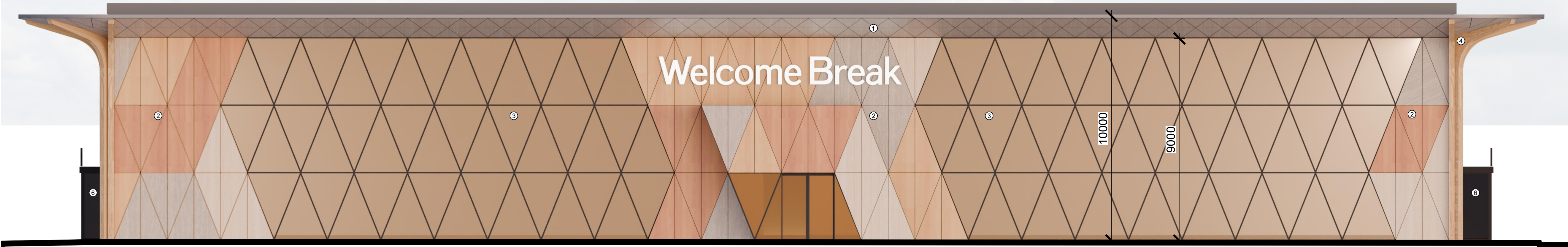
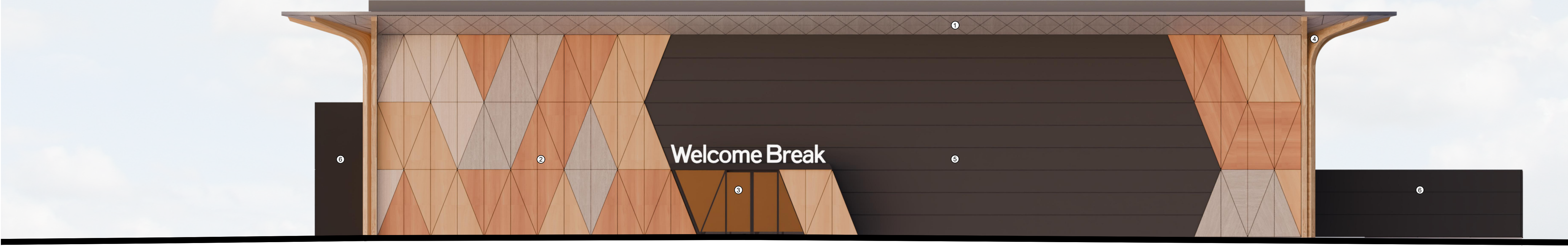


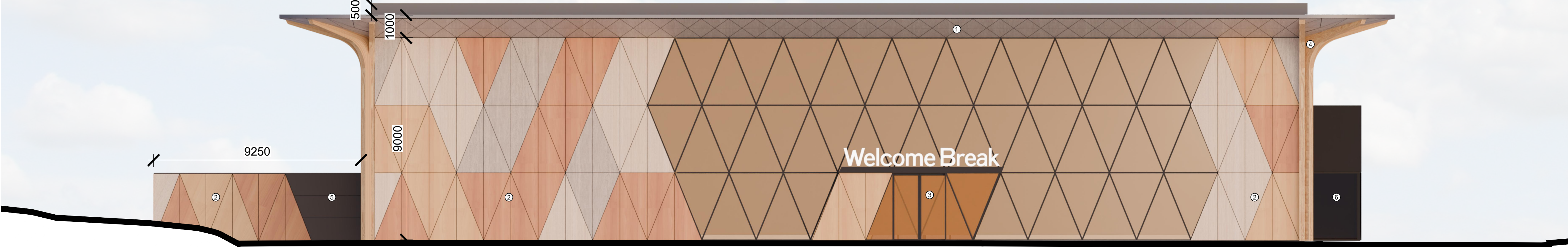
South East Elevation



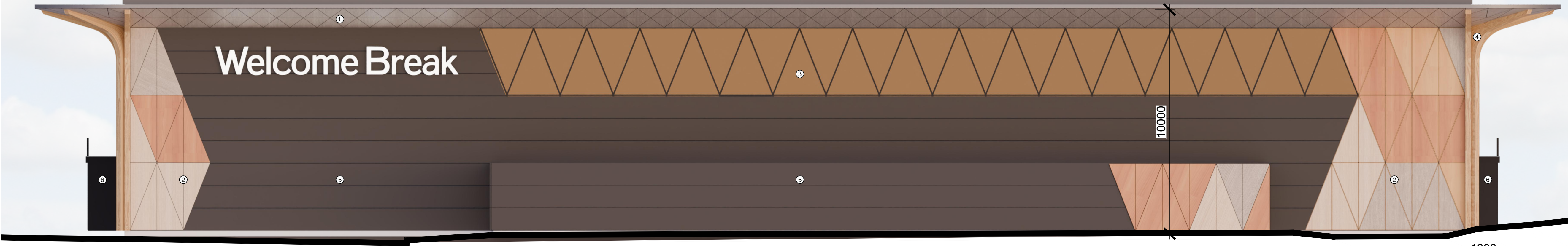
North East Elevation



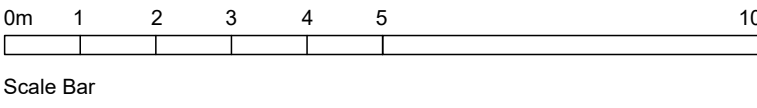
South West Elevation



North West Elevation



THIS DOCUMENT AND ALL INFORMATION CONTAINED HEREIN IS CONFIDENTIAL AND THE INTELLECTUAL PROPERTY OF ADS DESIGN. IT IS DISCLOSED IN CONFIDENCE ON TERMS THAT IT WILL NOT BE DISCLOSED TO ANY THIRD PARTY, USED, SOLD, LOANED, LICENSED OR REPRODUCED IN WHOLE OR IN PART IN ANY MANNER OR FORM FOR MANUFACTURING, TENDERING OR FOR ANY OTHER PURPOSE WITHOUT THE WRITTEN PERMISSION OF ADS DESIGN. © ADS DESIGN



Materials Key:

- ① Trespa Cladding to Perimeter Canopy Soffit
- ② Trespa Feature Rainscreen Cladding
- ③ Glazing, all aluminium frames to be Dark Grey
- ④ Glulam Engineered Wood Corner 'Trees'
- ⑤ Composite Cladding in Dark Grey
- ⑥ Grey Pressed Metal Cladding to match Composite Cladding

B	07.11.24	SW ELEVATION UPDATED
A	07.11.24	MINOR AMENDMENTS
REVISIONS		
CLIENT	WELCOME BREAK	
PROJECT	BRIDGWATER EAST SERVICES, J24, M5 TA7 0AH	
TITLE	PROPOSED BUILDING ELEVATIONS	
DATE	05.11.24	
SCALE	1:100 @ A1	
JOB ID	1516	
DWG	64b	